

DUMBWAITER

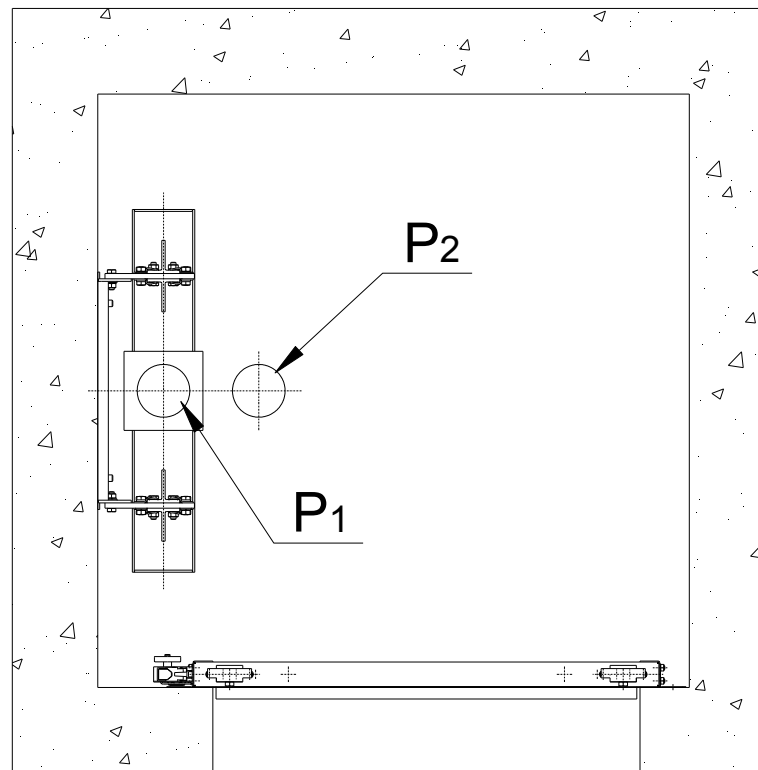
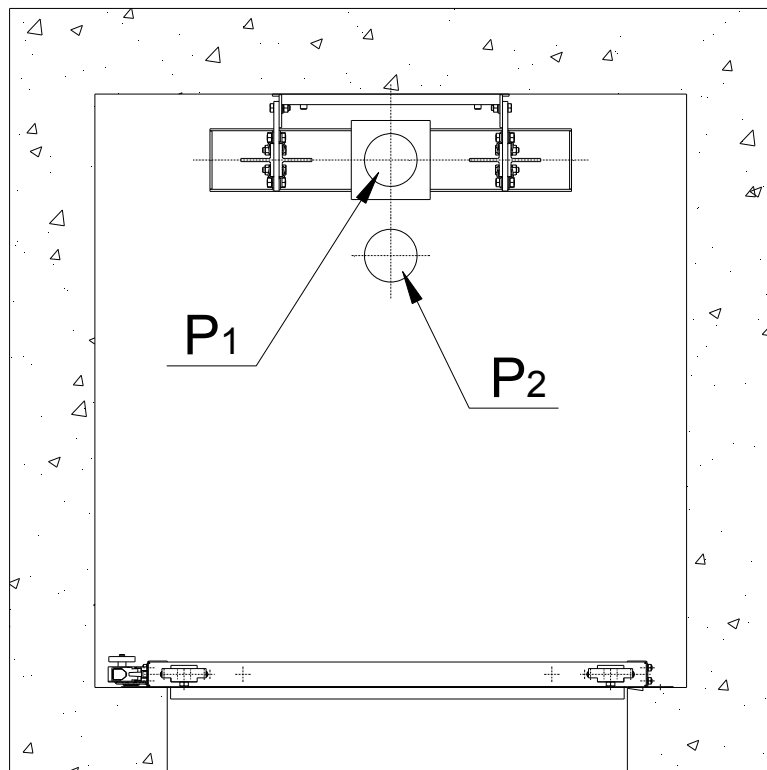
PLANNING DATA

| Technical Specifications | |
|---|---|
| Rated Load (Kg) | 150Kg (200Kg under circumstances) |
| Roping | 1:1 |
| max Travel (m) | 35 |
| Number of Stops | 8 |
| Car Speed (m/sec) | 0.37 (0.25 and 0.48 with special order) |
| min Pit Depth (mm) | 600 (700 for compliance with EN 81-3) |
| min Headroom (mm) | 1950 (for clear car height up to 1000 mm) |
| Car Sling Weight (Kg) | 36 |
| Car / Cwt Guide Rails | T50x50x5 |
| max Vertical Distance Between Brackets (mm) | 1500 |
| Ropes | 2 x Ø6 |
| Gear Type | MONTANARI M50 |
| Gear Current (Nominal/ Starting) (A) | 3 / 5.19 |
| Gear Power (KW) | 1.1 (0.7 for 0.25 m/s) |
| Car DBG (mm) | 456 |
| Cwt DBG (mm) | 240 |
| Max Car Depth (mm) | 1000 |
| Max Car Area (m ²) | 1,00 |

Small Freights Traction Lift Certified in compliance with EN 81-3

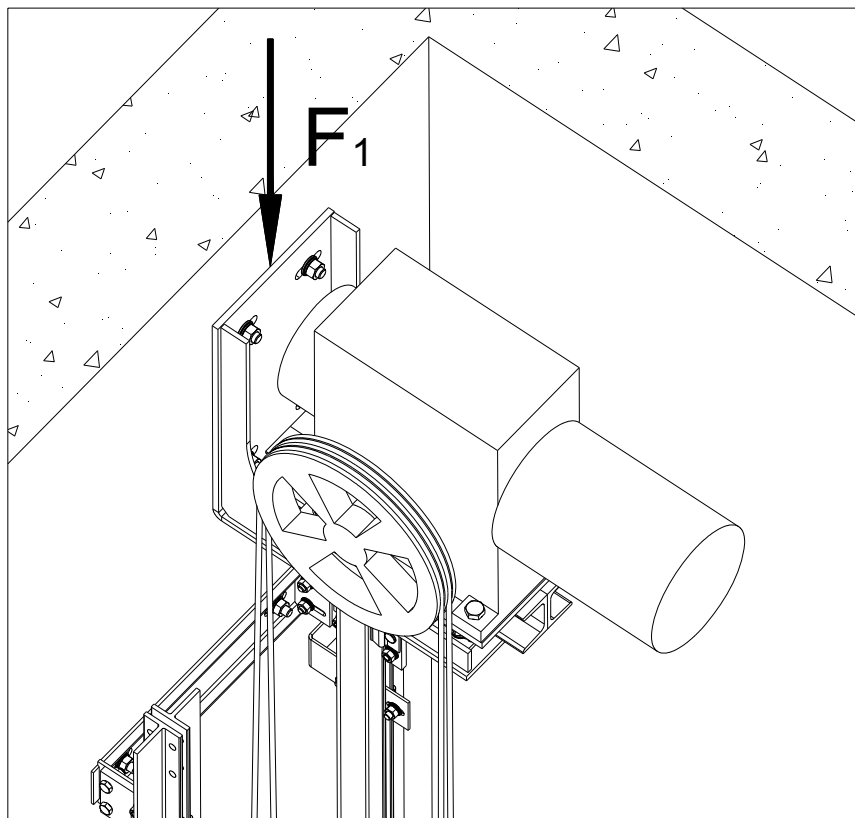
FORCES ON SHAFT OF THE DUMBWAITER

a. Forces on Pit Floor



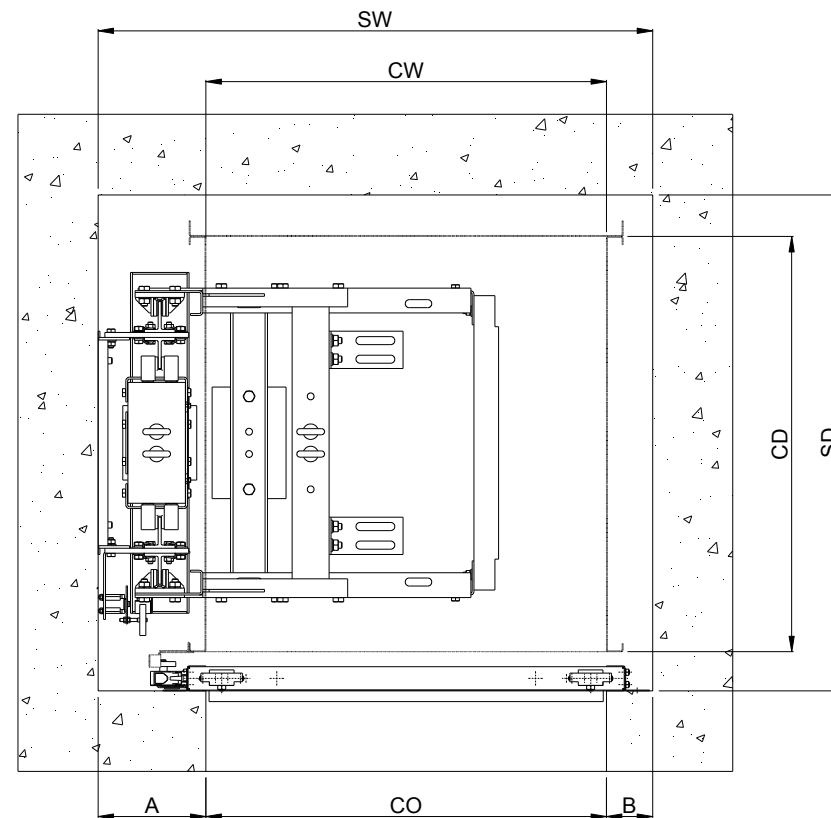
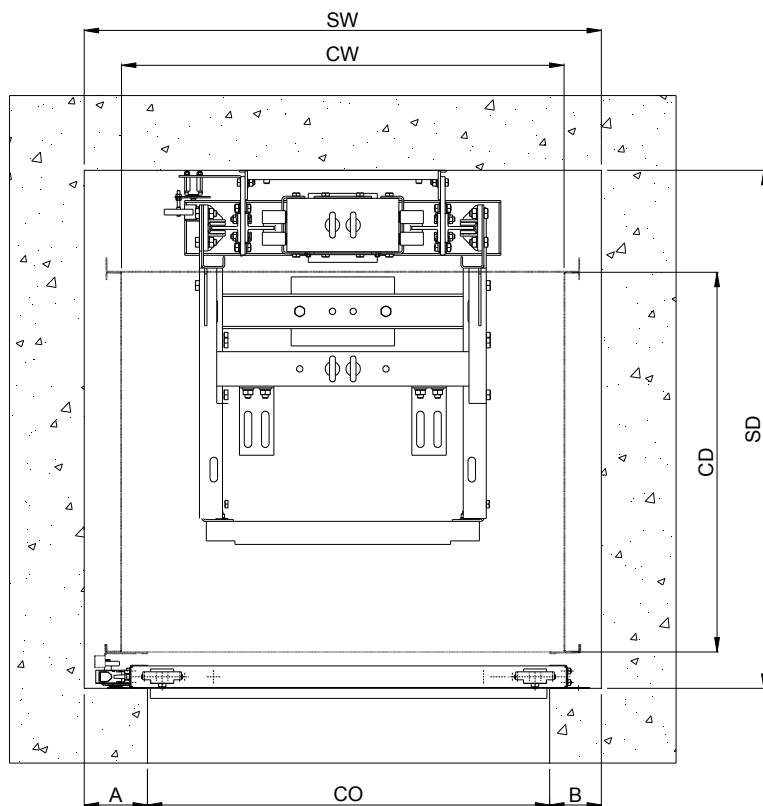
| Rated Load [Kg] | 50 | 100 | 150 | 200 |
|-----------------|-----|-----|-----|-----|
| P1 [kN] | 3.4 | 3.9 | 4.4 | 5.3 |
| P2 [kN] | 3.9 | 4.9 | 5.9 | 7.3 |

b. Forces on Headroom Walls



| Rated Load (kg) | 50 | 100 | 150 | 200 |
|-----------------|-----|-----|------|------|
| F_1 [KN] | 8.3 | 9.8 | 11.3 | 13.1 |

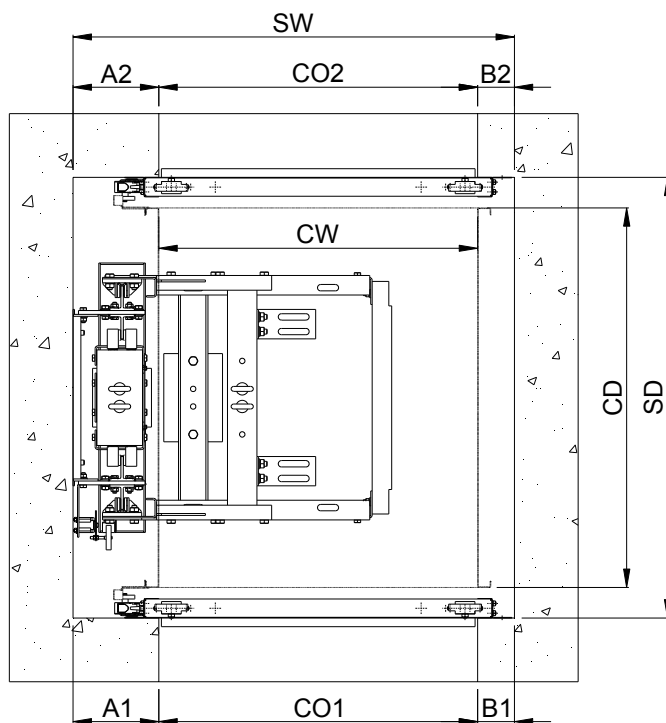
DUMBWAITER WITH ONE DOOR



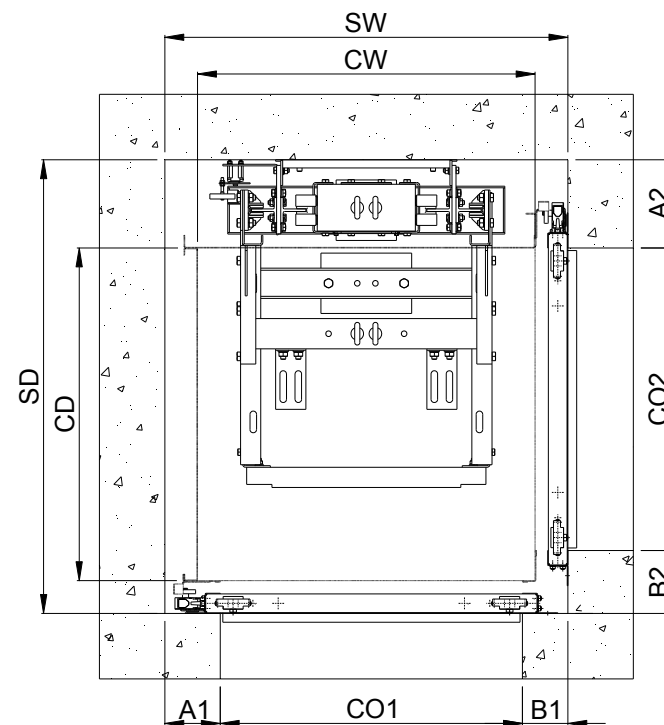
| | | |
|-----------|---------------|-------------------------------|
| SW | Shaft Width | min 680 |
| SD | Shaft Depth | min 740 |
| CW | Car Width | SW – 130 (min 550) |
| CD | Car Depth | SD – 240 (min 500 – max 1000) |
| CO | Clear Opening | SW – 200 |
| A | | min 110 |
| B | | min 90 |

| | | |
|-----------|---------------|-----------------------------------|
| SW | Shaft Width | min 750 |
| SD | Shaft Depth | min 730 |
| CW | Car Width | SW – 250 (min 500) |
| CD | Car Depth | SD – 130 (min 600 – max 1000) |
| CO | Clear Opening | SW – 290 (for 0 car nib SW – 250) |
| A | | min 200 (for 0 car nib min 175) |
| B | | min 90 (for 0 car nib min 75) |

DUMBWAITER WITH TWO DOORS

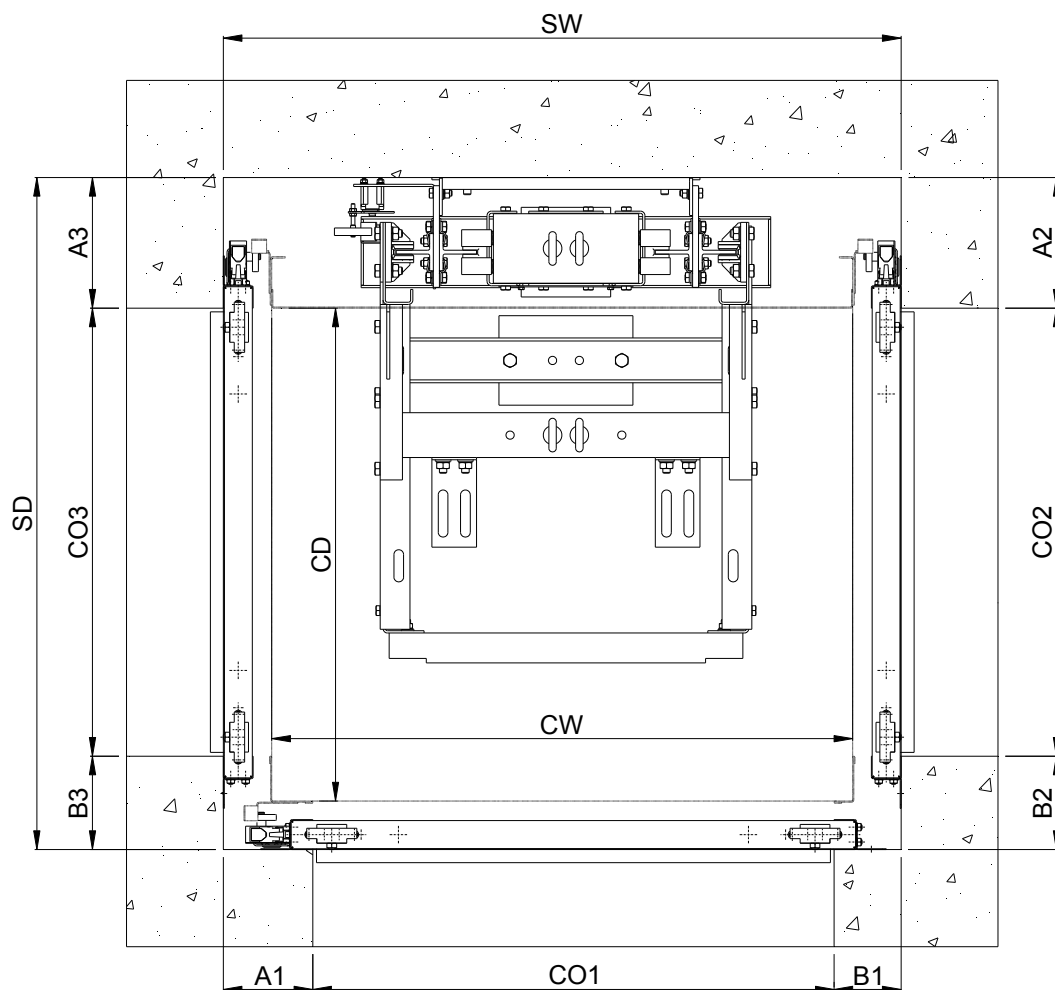


| | | |
|------------|-----------------|-----------------------------------|
| SW | Shaft Width | min 750 |
| SD | Shaft Depth | min 725 |
| CW | Car Width | SW – 250 (min 500) |
| CD | Car Depth | SD – 125 (min 600 - max 1000) |
| CO1 | Clear Opening 1 | SW – 290 (for 0 car nib SW – 250) |
| A1 | | min 200 (for 0 car nib min 175) |
| B1 | | min 90 (for 0 car nib min 75) |
| CO2 | Clear Opening 2 | SW – 290 (for 0 car nib SW – 250) |
| A2 | | min 200 (for 0 car nib min 175) |
| B2 | | min 90 (for 0 car nib min 75) |

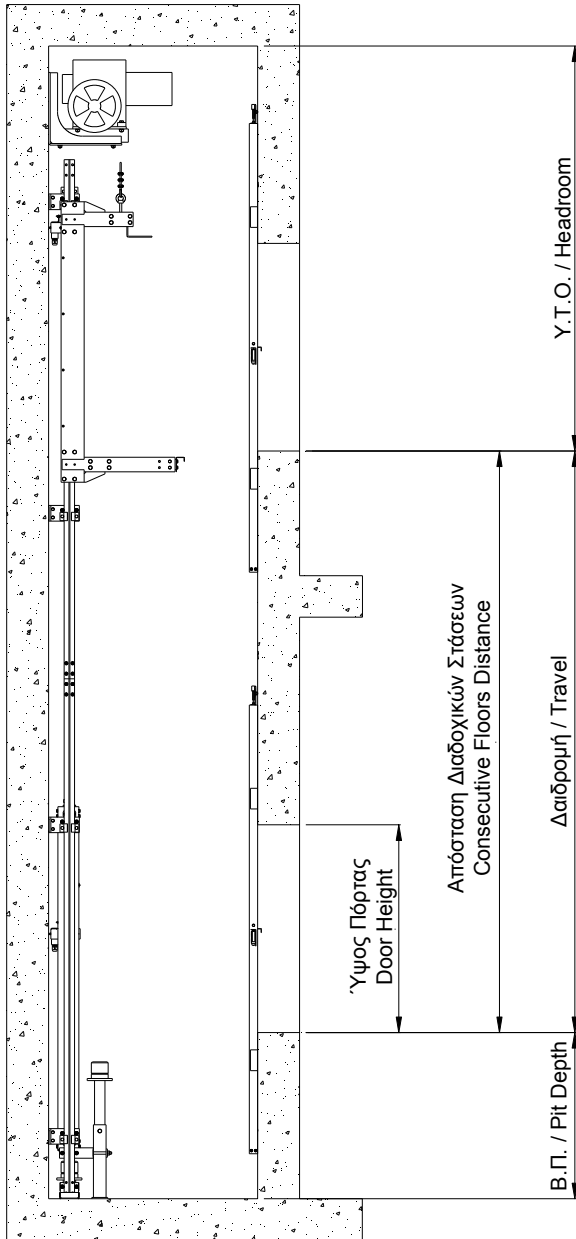


| | | |
|------------|-----------------|-----------------------------------|
| SW | Shaft Width | min 680 |
| SD | Shaft Depth | min 740 |
| CW | Car Width | SW – 130 (min 550 – max 1000) |
| CD | Car Depth | SD – 240 (min 500 – max 1000) |
| CO1 | Clear Opening 1 | SW – 200 |
| A1 | | min 110 |
| B1 | | min 90 |
| CO2 | Clear Opening 2 | SW – 290 (for 0 car nib SW – 265) |
| A2 | | min 200 (for 0 car nib min 175) |
| B2 | | min 90 |

DUMBWAITER WITH THREE DOORS



| | | |
|------------|-----------------|-----------------------------------|
| SW | Shaft Width | min 730 |
| SD | Shaft Depth | min 740 |
| CW | Car Width | SW – 130 (min 600 – max 1000) |
| CD | Car Depth | SD – 240 (min 500- max 1000) |
| CO1 | Clear Opening 1 | SW – 210 |
| A1 | | min 120 |
| B1 | | min 90 |
| CO2 | Clear Opening 2 | SW – 290 (for 0 car nib SW – 265) |
| A2 | | min 200 (for 0 car nib min 175) |
| B2 | | min 90 |
| CO3 | Clear Opening 3 | SW – 325 (for 0 car nib SW – 300) |
| A3 | | min 200 (for 0 car nib min 175) |
| B3 | | min 125 |



| | Dimensions (mm) | Remarks |
|--|------------------------|---------------------------------------|
| Min. Pit | 600 | Min 700 mm for Compliance with 81-3 |
| Min. Headroom | 1950 | For Clear Car Height up to 1000 mm |
| Min Distance Between Successive Stops | 2 x Door's Height+ 300 | For Successive doors in the Same Side |